

NAVSHIPS 36 (374) Classification canceled by authority of  
OPNAVINST S5513.16 enclosure (2)  
on 12 SEP 94 [Signature] [Rank]  
(Date) (Signature) (Rank)  
NAVAL SEA SYSTEMS COMMAND  
Department of the Navy

# U. S. S. CHESTER (CA27)

## TORPEDO DAMAGE

20 OCTOBER, 1942

SOLOMON ISLANDS

# U. S. S. MINNEAPOLIS (CA36)

## TORPEDO DAMAGE

30 NOVEMBER, 1942

BATTLE OF LUNGA POINT

FILE COPY

RETURN TO CODE 433

The Commander-in-Chief, United States Fleet and Chief of Naval Operations directs that this report be shown only to those persons to whom the report would be of value in the performance of their duties.

Steps shall be taken accordingly to insure that the report will be seen by those persons responsible for design, construction and repair of naval vessels, as well as for their operation, but by no others.

13 January, 1944

Preliminary Design Section  
Bureau of Ships  
Navy Department

WAR DAMAGE REPORT No. 36

Printed By U. S. Hydrographic Office





Photo 1: USS CHESTER - General view from starboard quarter showing armor plate missing above hole, broken searchlight, bent radar and damaged life rafts.



Photo 2: USS CHESTER - View of torpedo hole from dry dock floor.



Photo 13: USS CHESTER - No. 2 fireroom from starboard gratings showing part of the upper course of shoring on bulkhead 64.

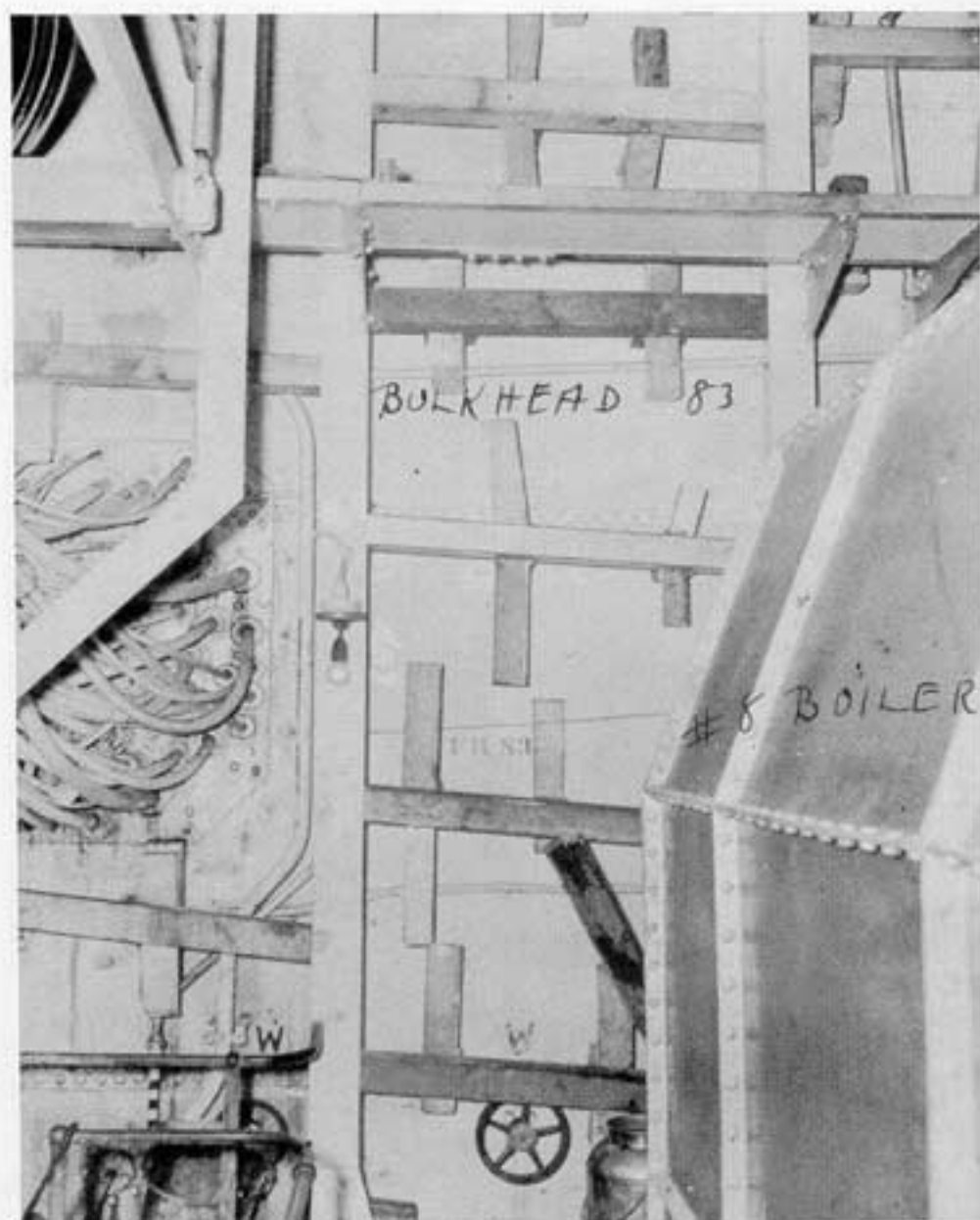


Photo 14: USS CHESTER - No. 4 fireroom looking forward and showing the shoring between stiffeners on bulkhead 83.



*Minneapolis moving on barge in  
Ringbolt harbor, 1 Dec 1942  
Cutting away of damaged bow  
structure just beginning.*



Photo No.15: USS MINNEAPOLIS - View of damaged bow before it was cut away.



*Minneapolis log breakwater  
on leaving Ringbolt  
12 Dec 1942.*

Photo No.16: USS MINNEAPOLIS - View of log breakwater.



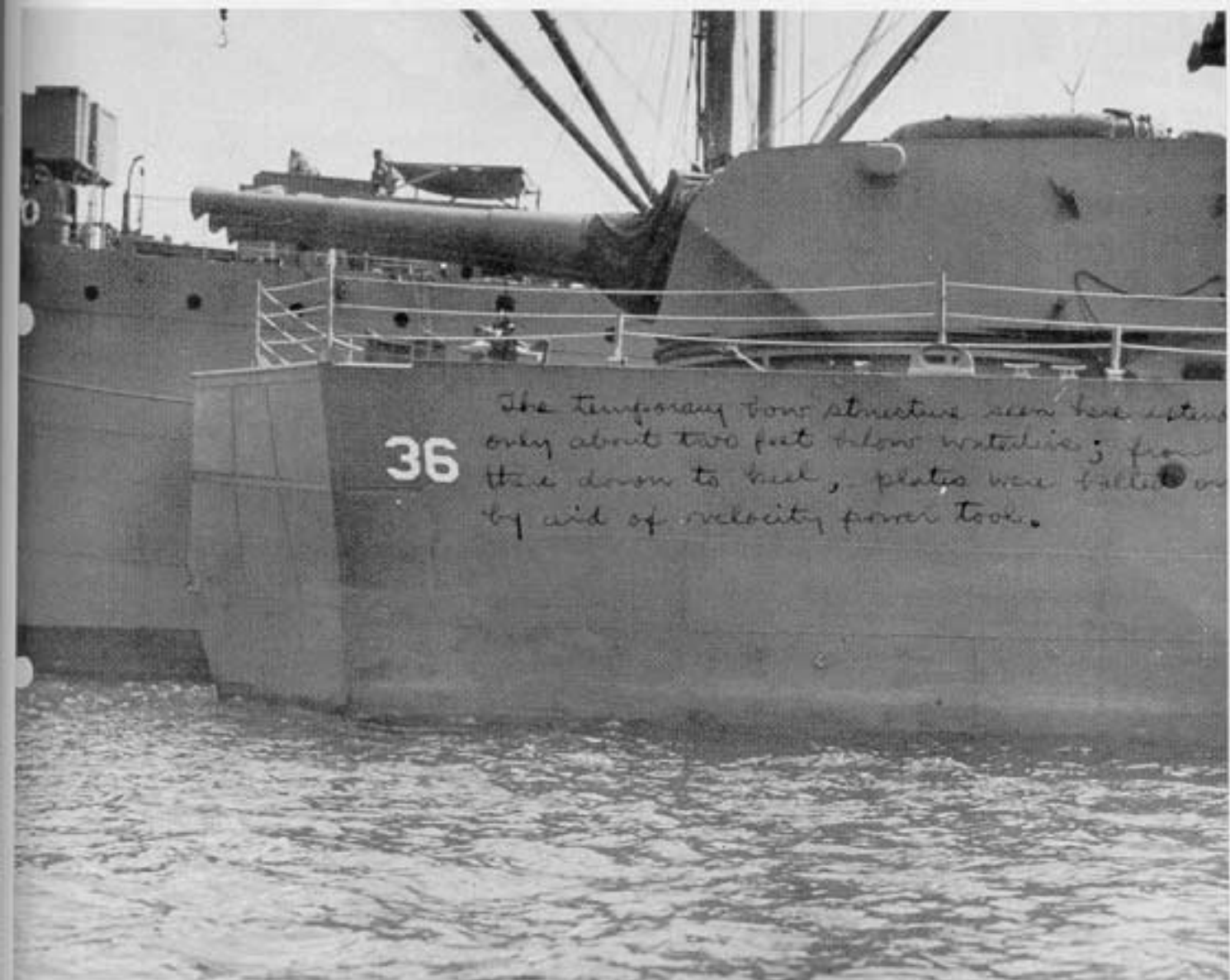


Photo No.17: USS MINNEAPOLIS - View of temporary bow.



Photo No.18: USS MINNEAPOLIS - Flat keel frame 20 looking aft and to port.

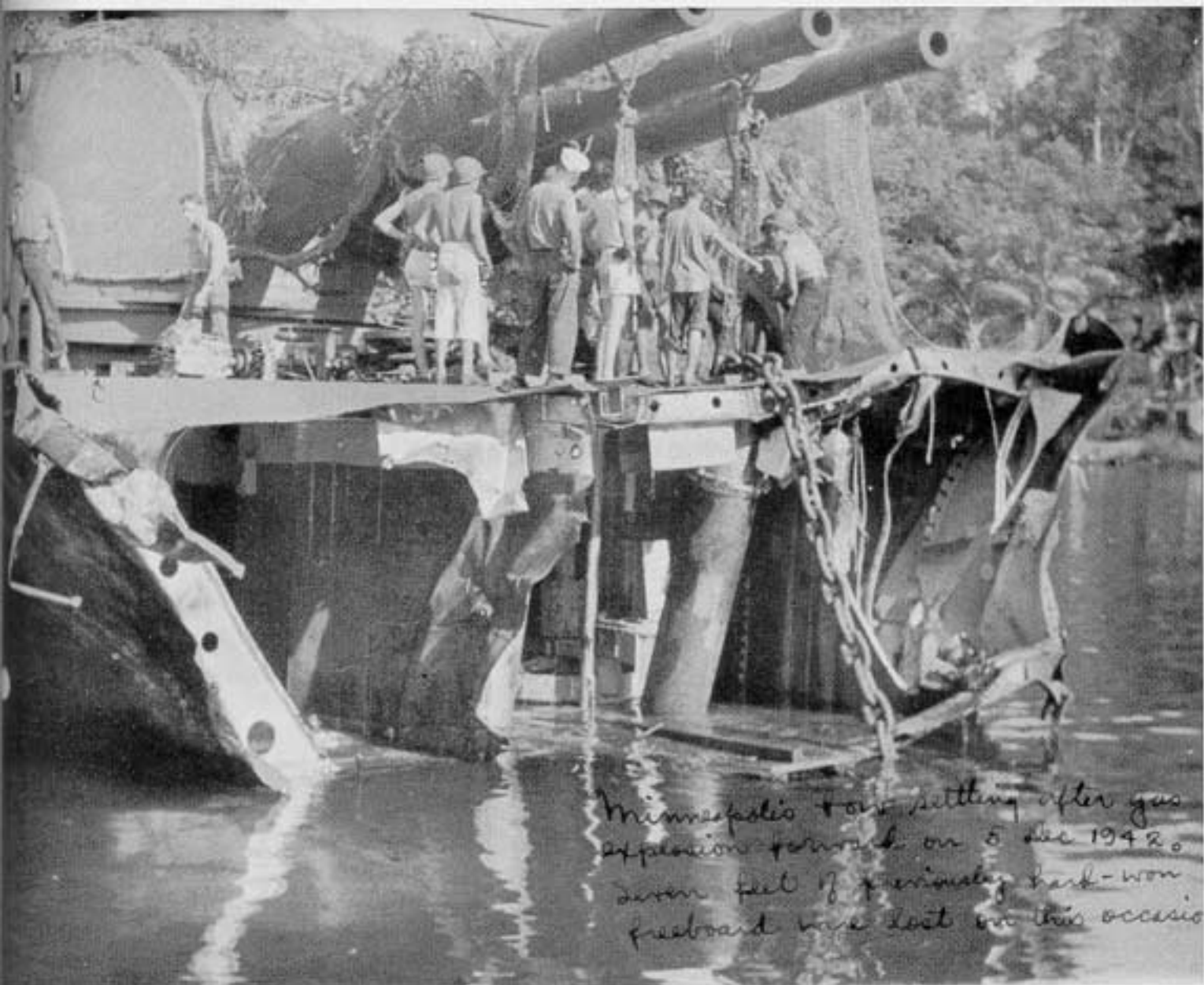


Photo No.19: USS MINNEAPOLIS - Looking aft at frame 20 just after gas explosion which caused draft to increase. Note water level at main deck.

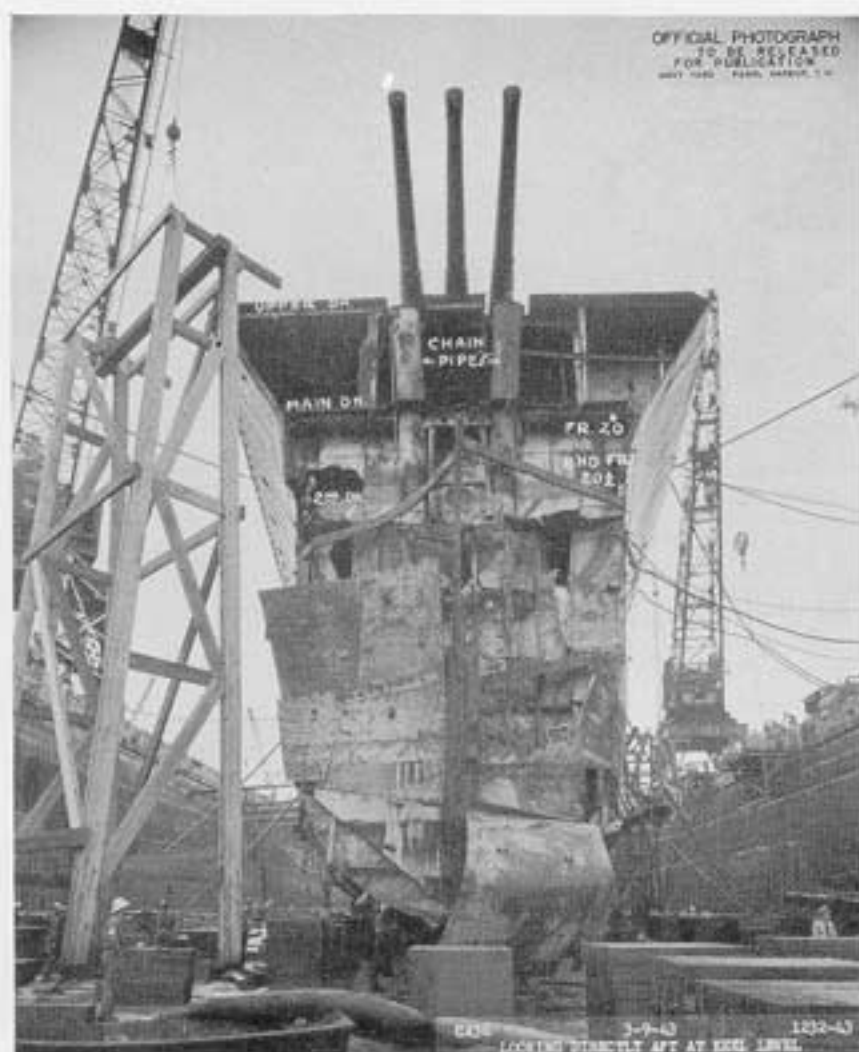


Photo No.20: USS MINNEAPOLIS - Bow after drydocking. Upper part of temporary bow has been removed; temporary bolted plates intact on starboard side.



OFFICIAL PHOTOGRAPH  
TO BE RELEASED  
FOR PUBLICATION  
NAVY FILE: OCEAN BARRAGE, T. N.

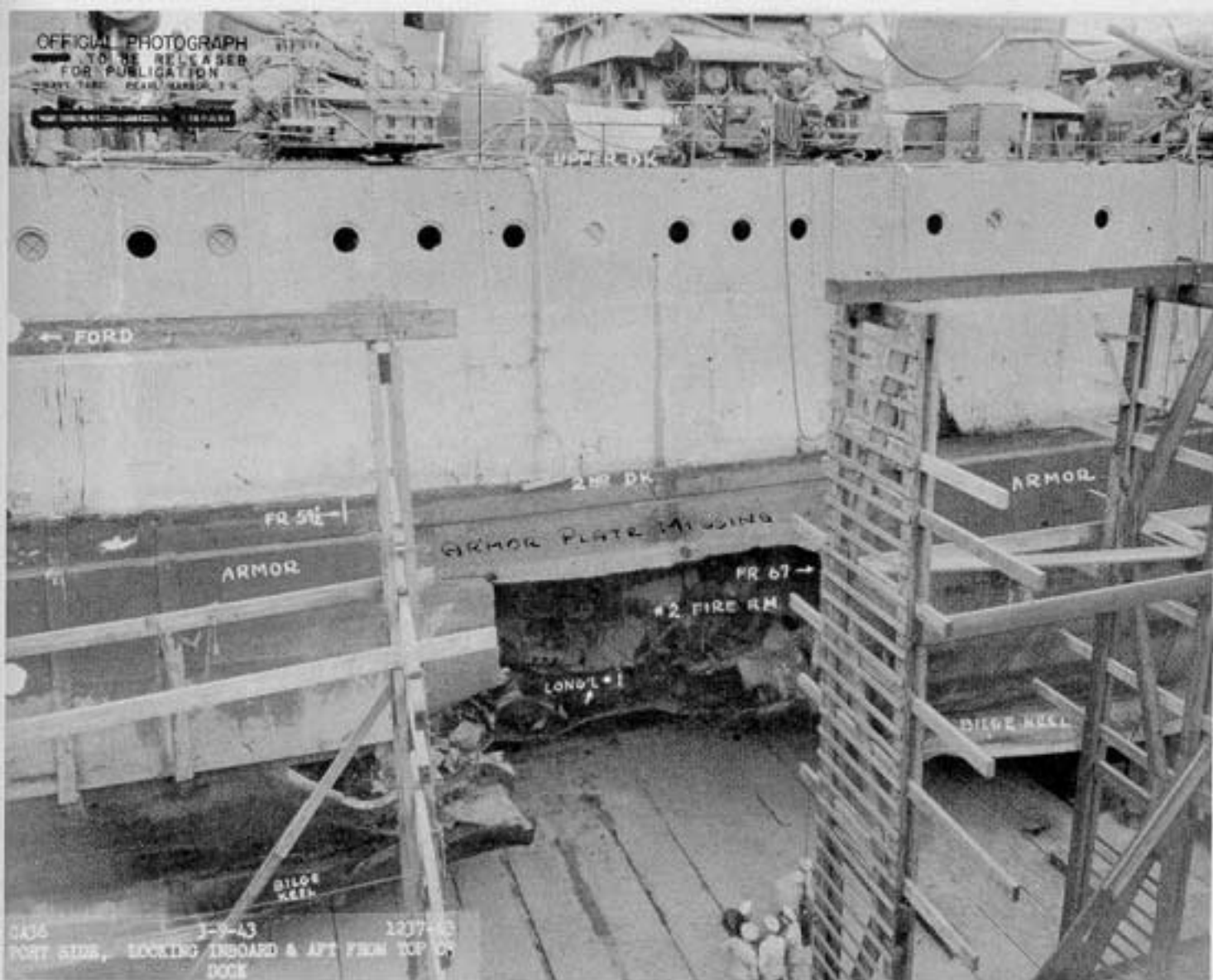


Photo No.21: USS MINNEAPOLIS - Port side looking inboard and aft abreast Nos. 1 and 2 firerooms.



Photo No.22: USS MINNEAPOLIS - Port side looking aft No. 2 fireroom.



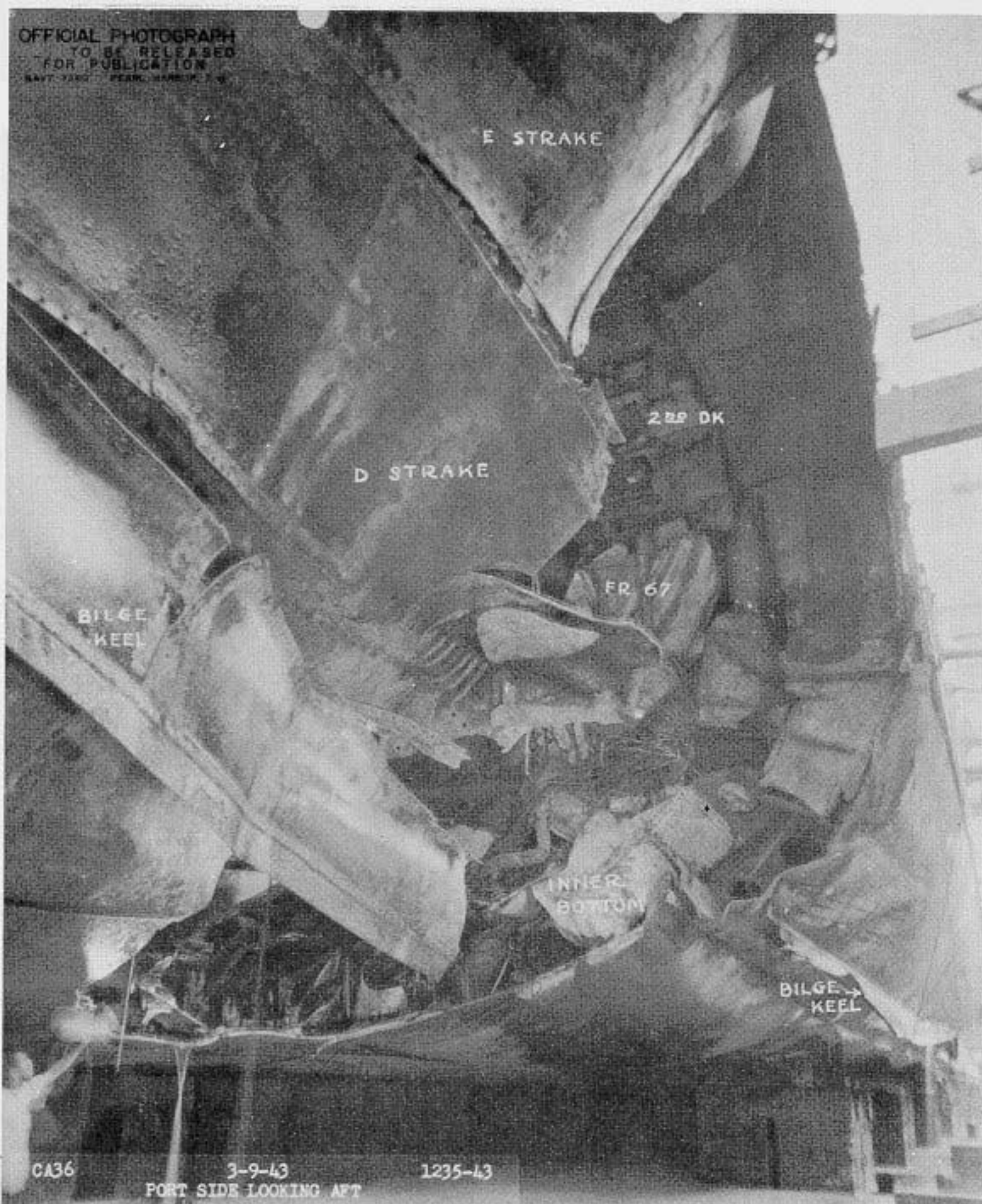


Photo No.23: USS MINNEAPOLIS - Port side looking inboard and up No. 2 fireroom.



Photo No.24: USS MINNEAPOLIS - Port airlock in No. 3 fireroom looking forward and outboard.



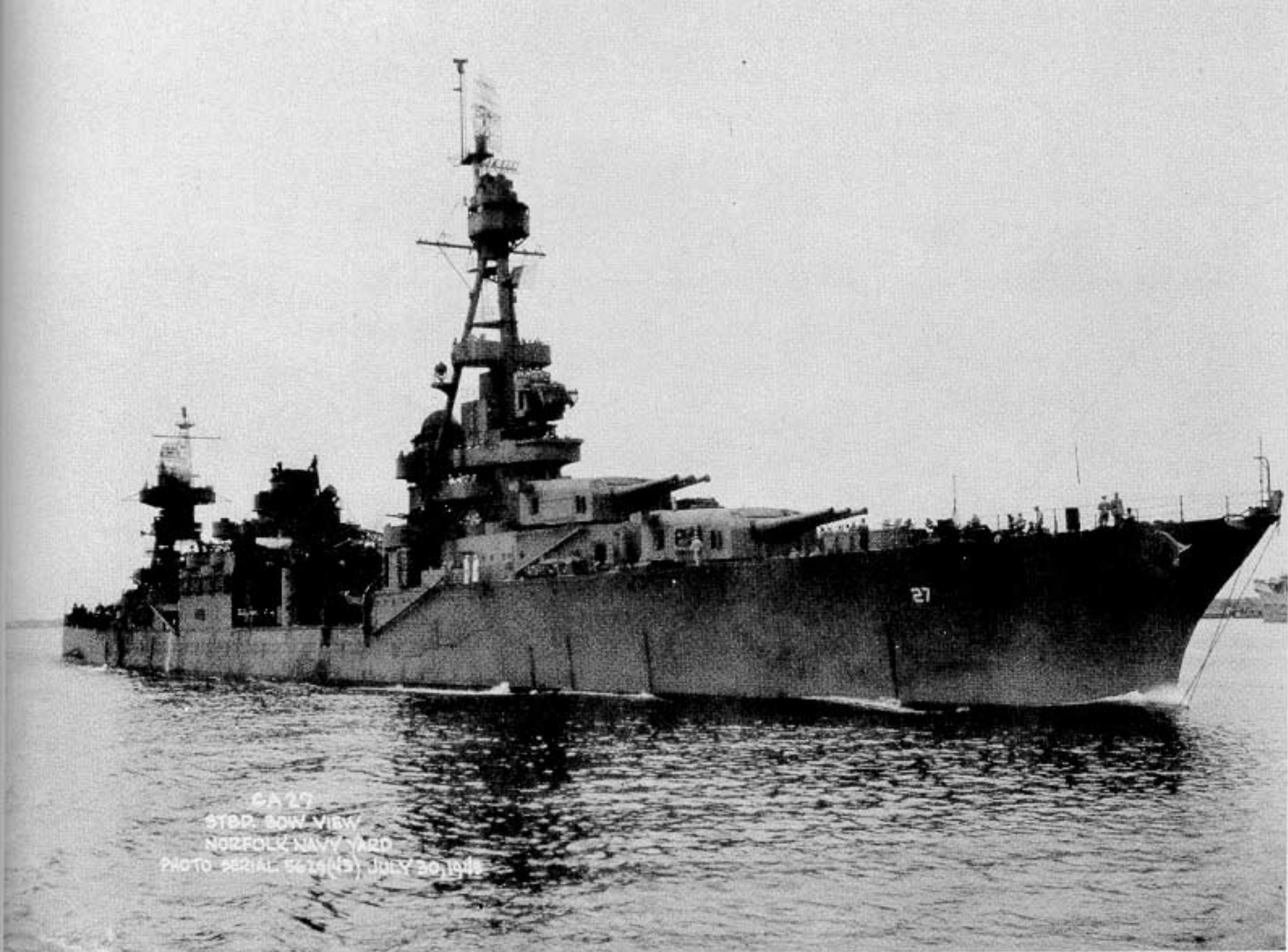


Photo No.25: USS MINNEAPOLIS - Port side No. 1 fireroom.



Photo No.26: USS MINNEAPOLIS - Port side second deck looking aft showing temporary shoring.





CA 27  
STBD. SOW VIEW  
NORFOLK NAVY YARD  
PHOTO SERIAL 5675(43) JULY 30, 1948

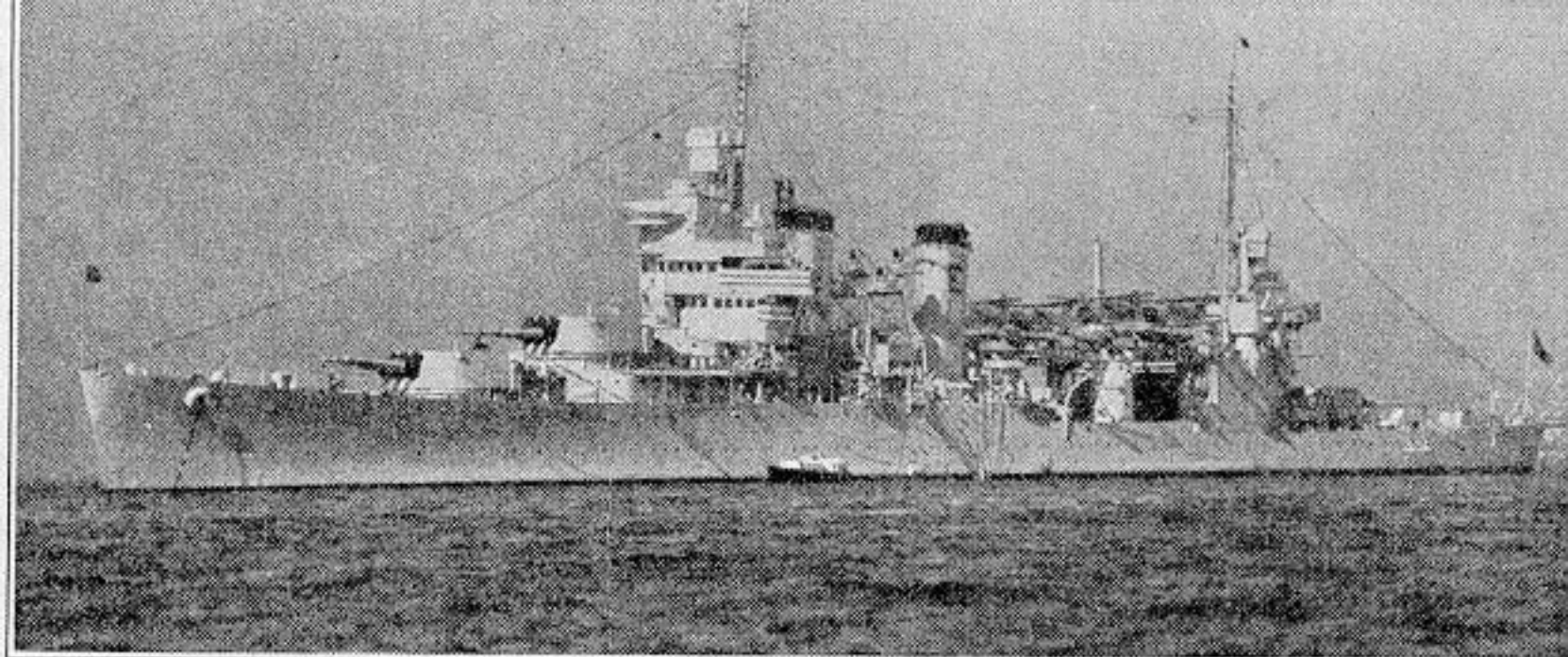
Photo No.27: CHESTER after completion of all repairs.



OFFICIAL PHOTOGRAPH  
TO BE RELEASED  
FOR PUBLICATION  
NAVY YARD MARE ISLAND, CALIF



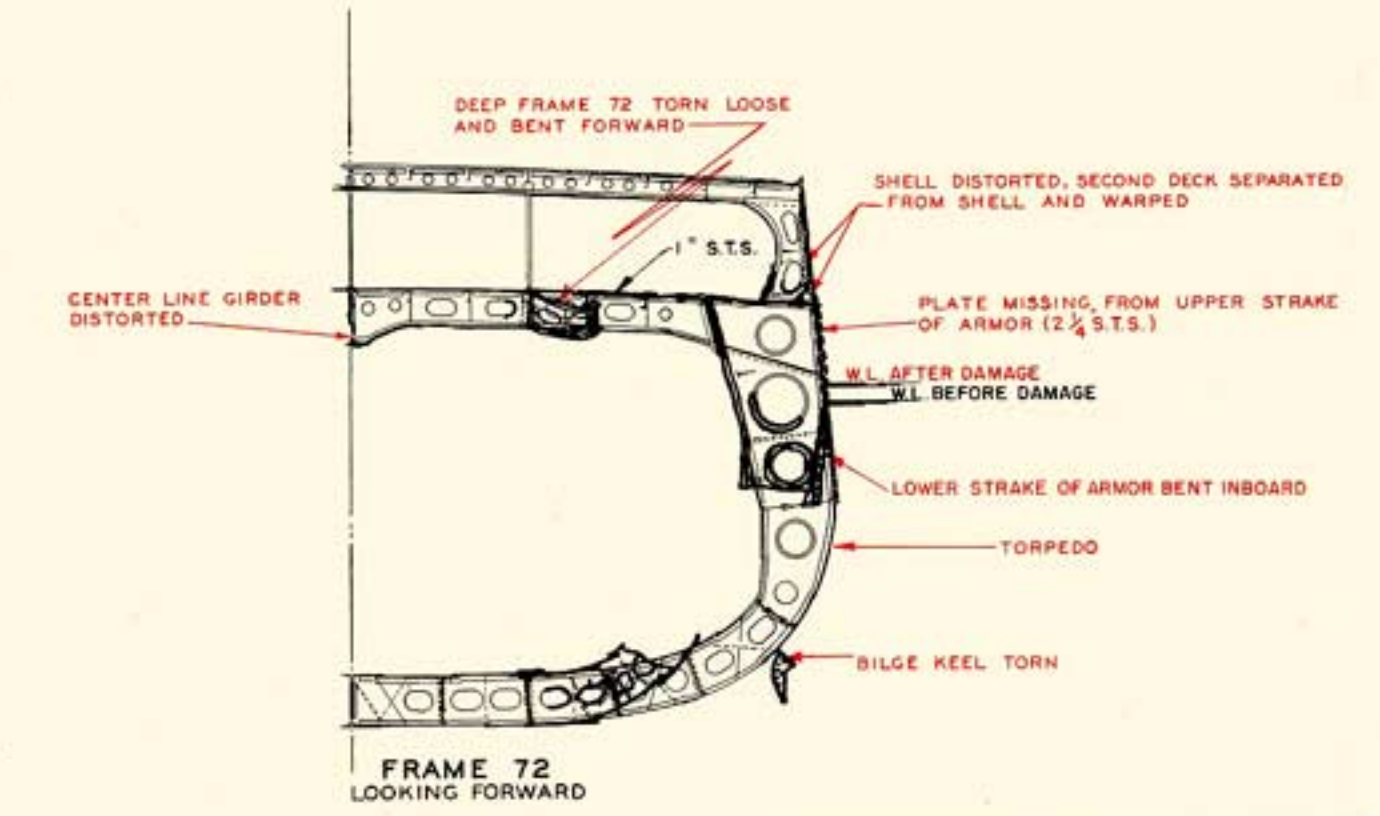
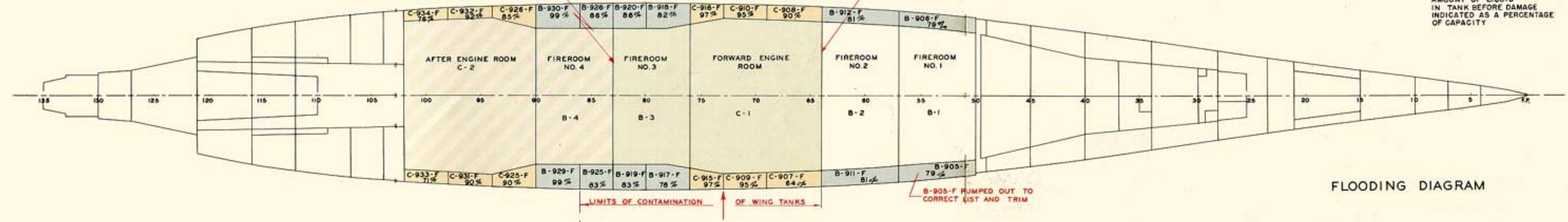
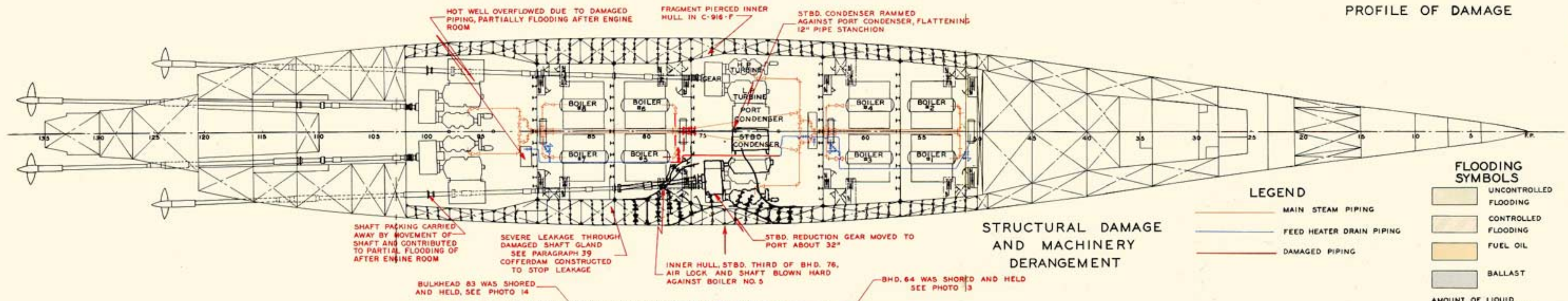
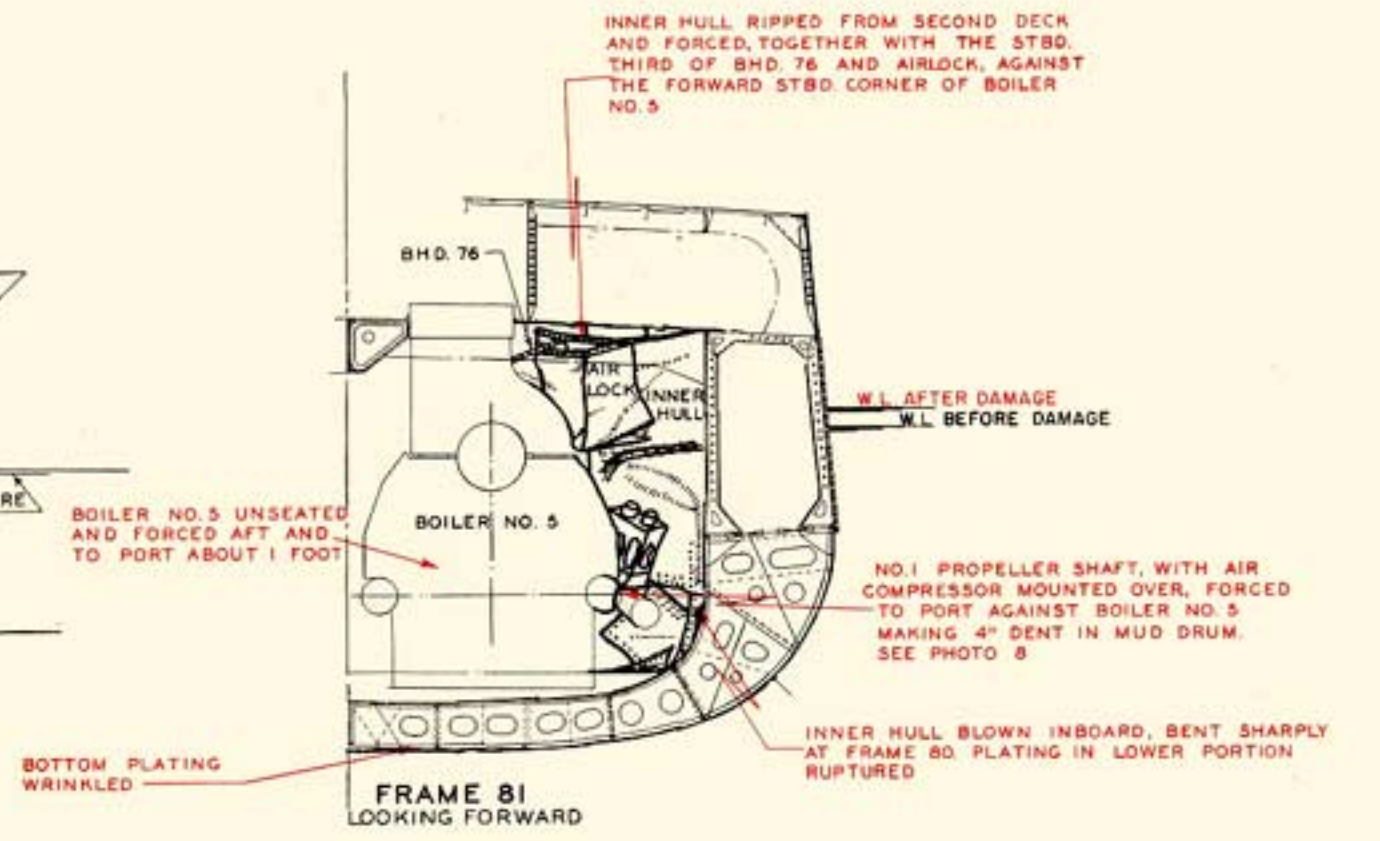
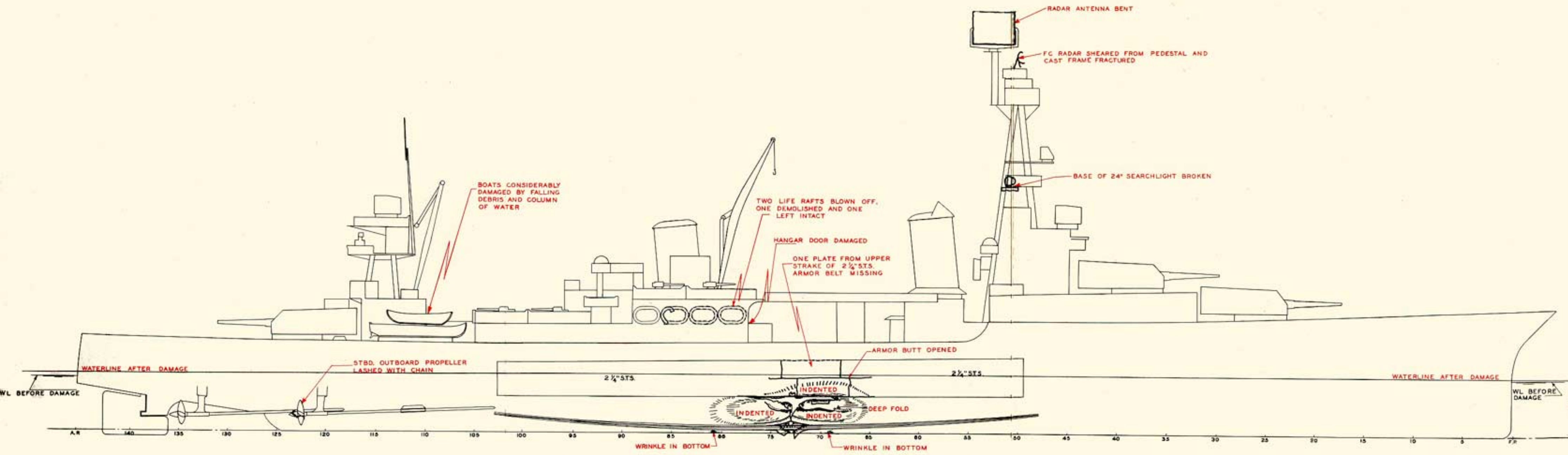
Photo No.28: MINNEAPOLIS after completion of all repairs.



HEAVY CRUISER

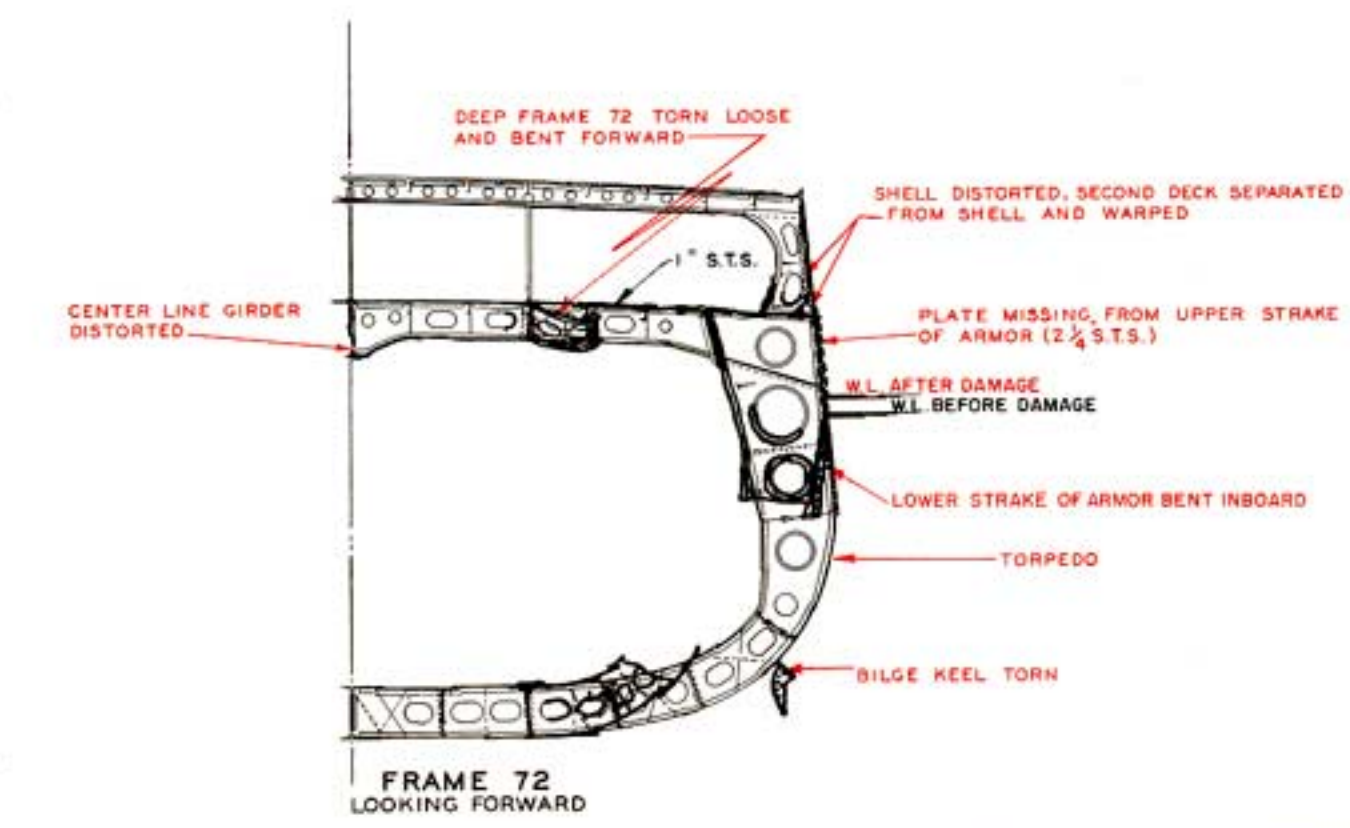
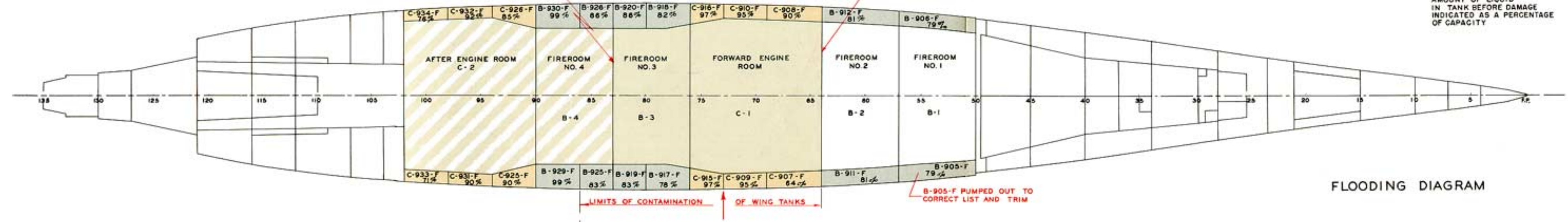
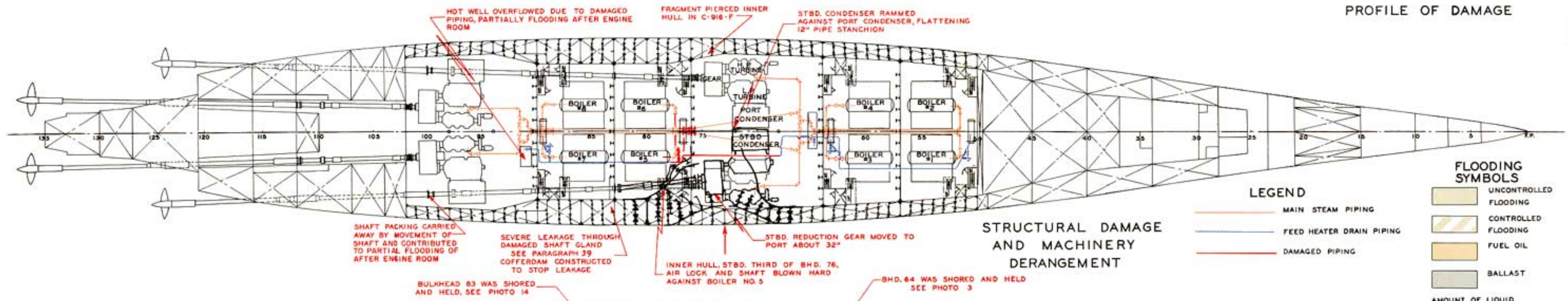
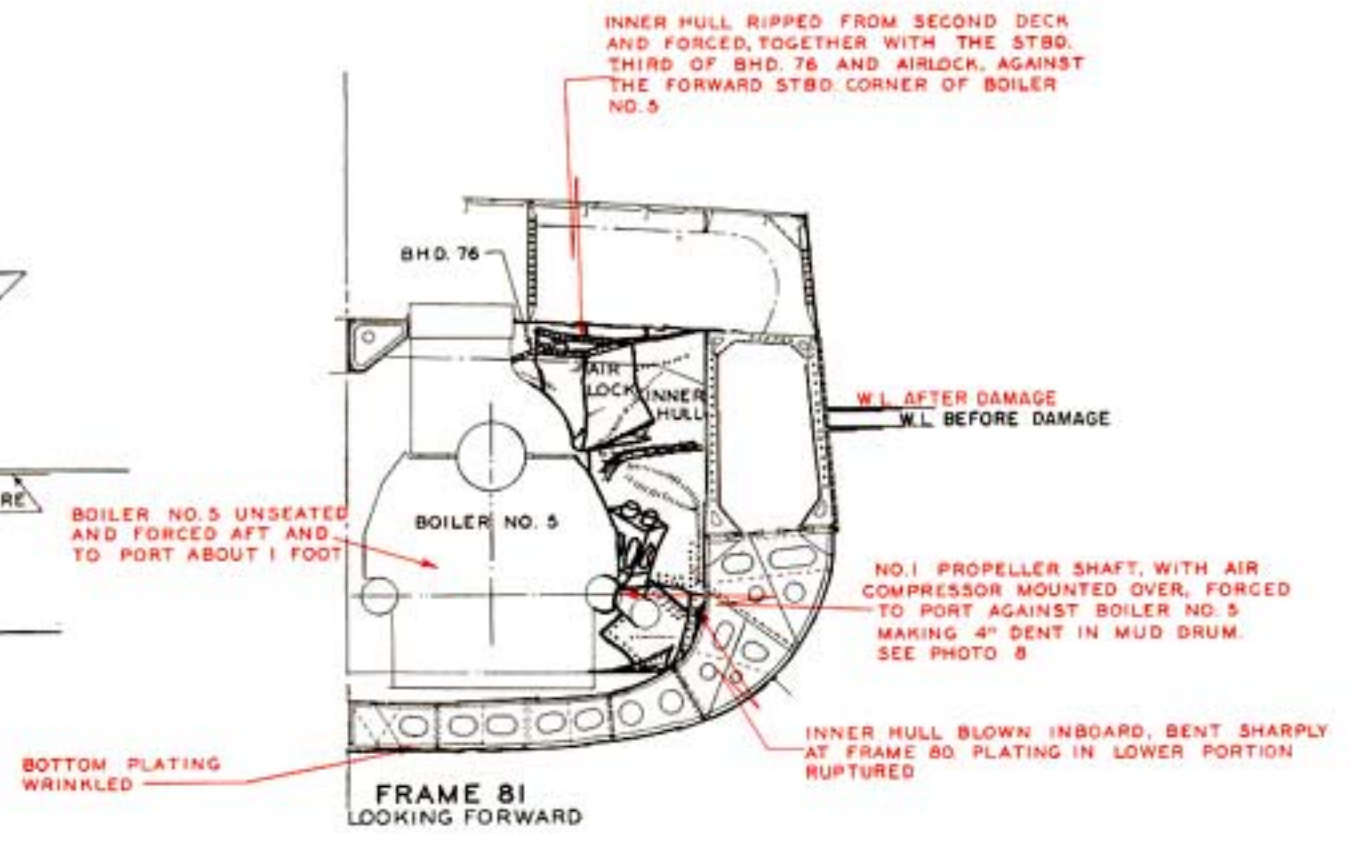
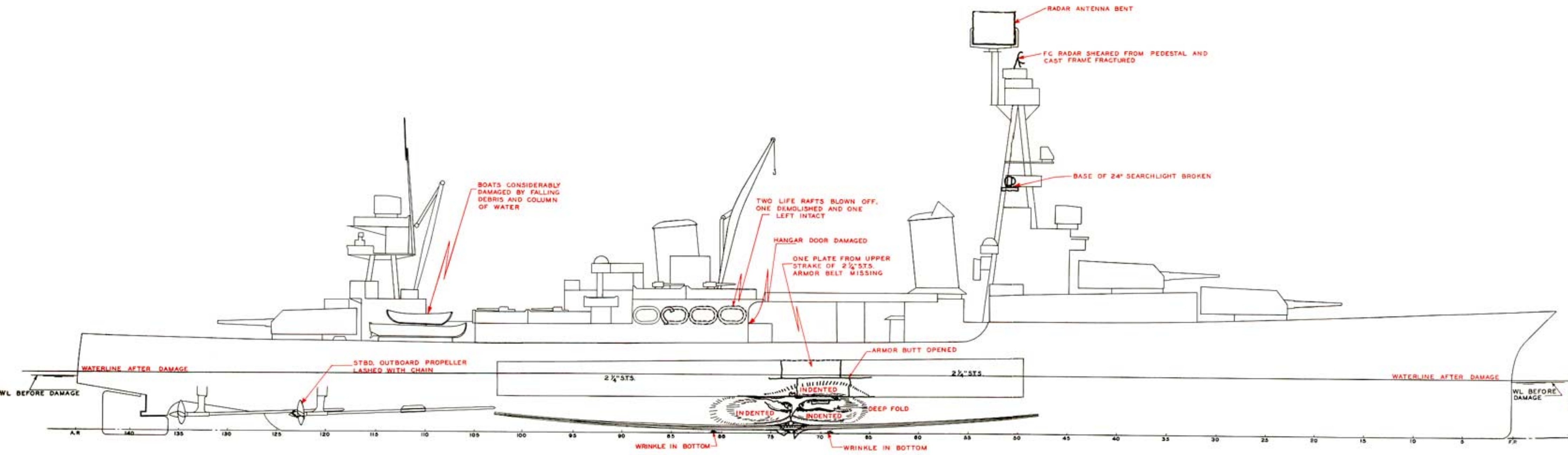
*U. S. S. Minneapolis*





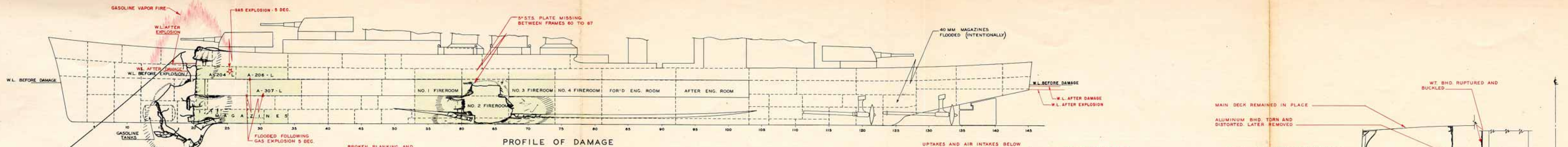
U.S.S. CHESTER SOUTH PACIFIC CA-27 20 OCT., 1942  
**TORPEDO DAMAGE**  
 NAVY DEPT. BUREAU OF SHIPS



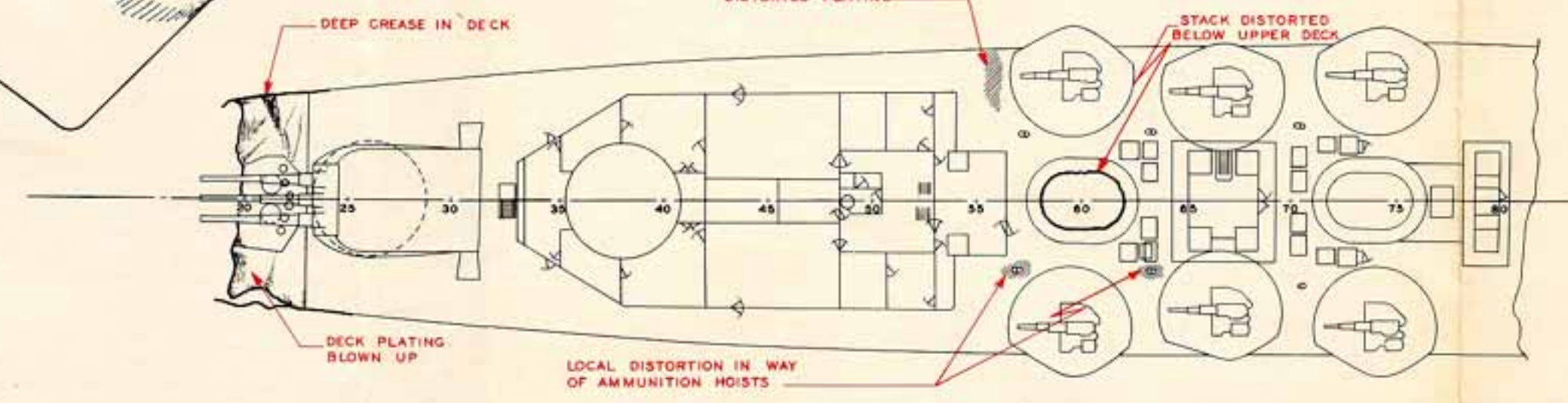


U.S.S. CHESTER SOUTH PACIFIC CA-27 20 OCT., 1942  
**TORPEDO DAMAGE**  
 NAVY DEPT. BUREAU OF SHIPS

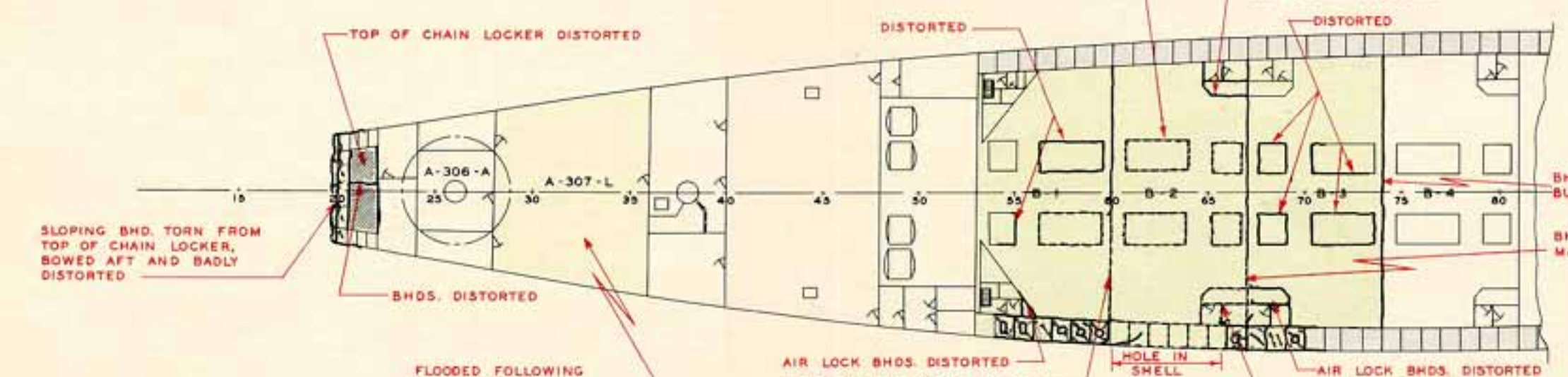




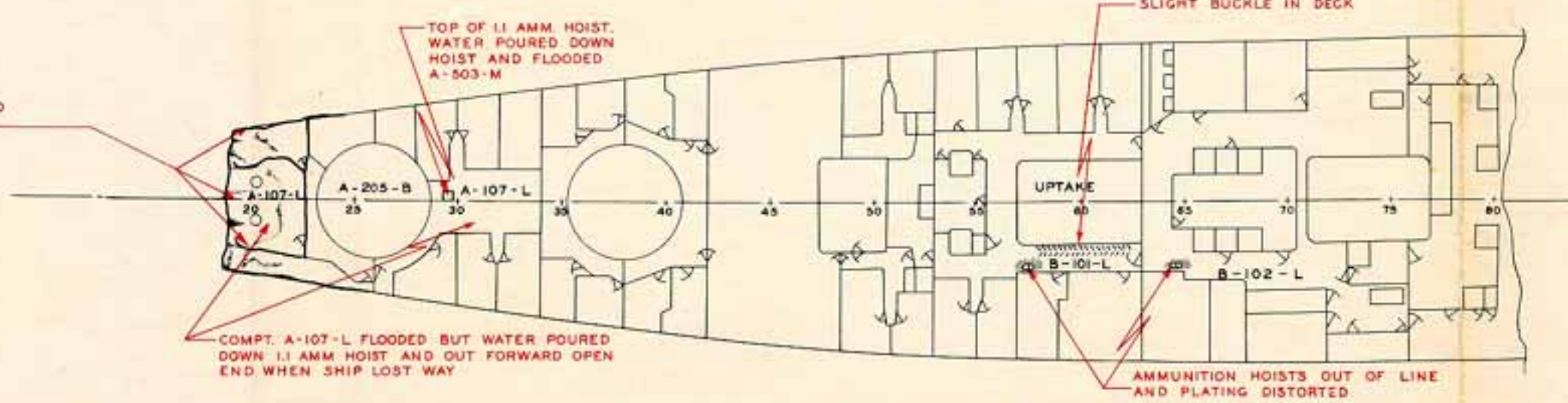
PROFILE OF DAMAGE



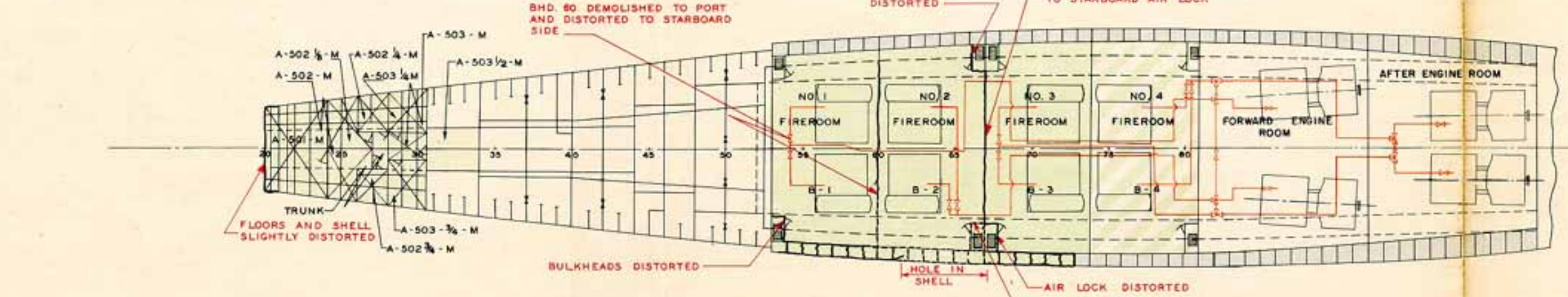
UPPER DECK



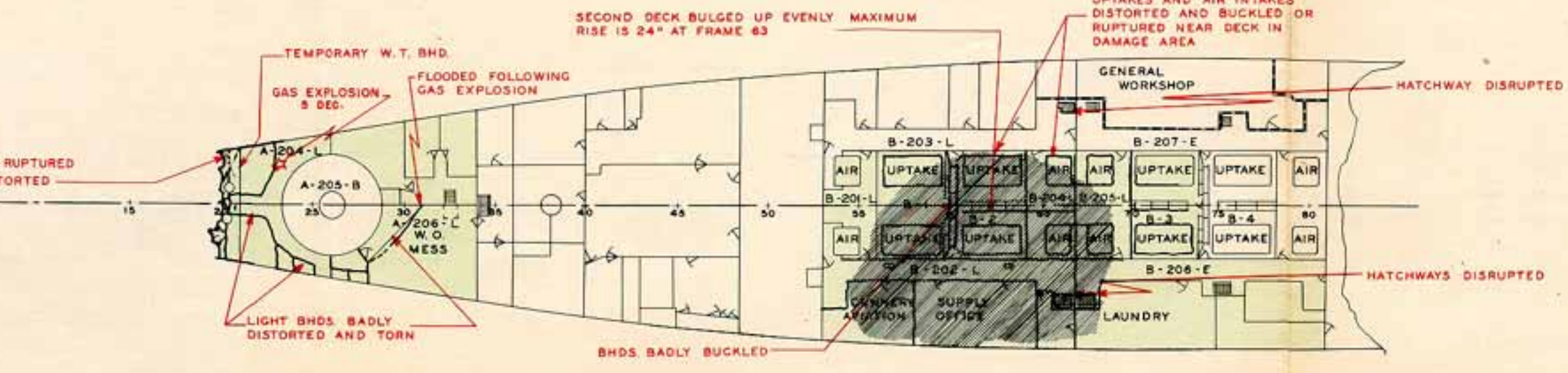
FIRST PLATFORM



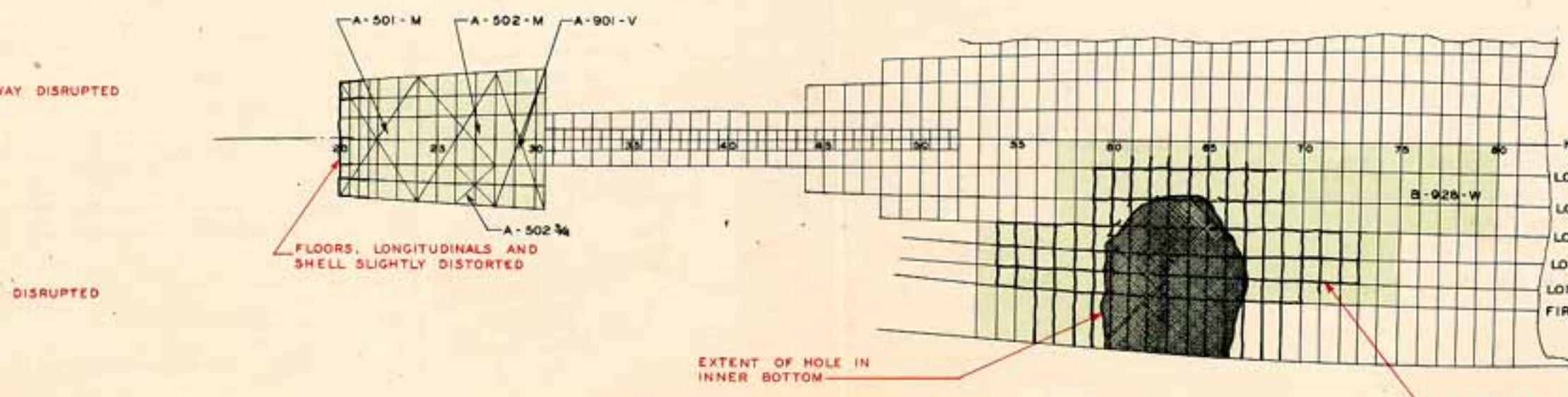
MAIN DECK



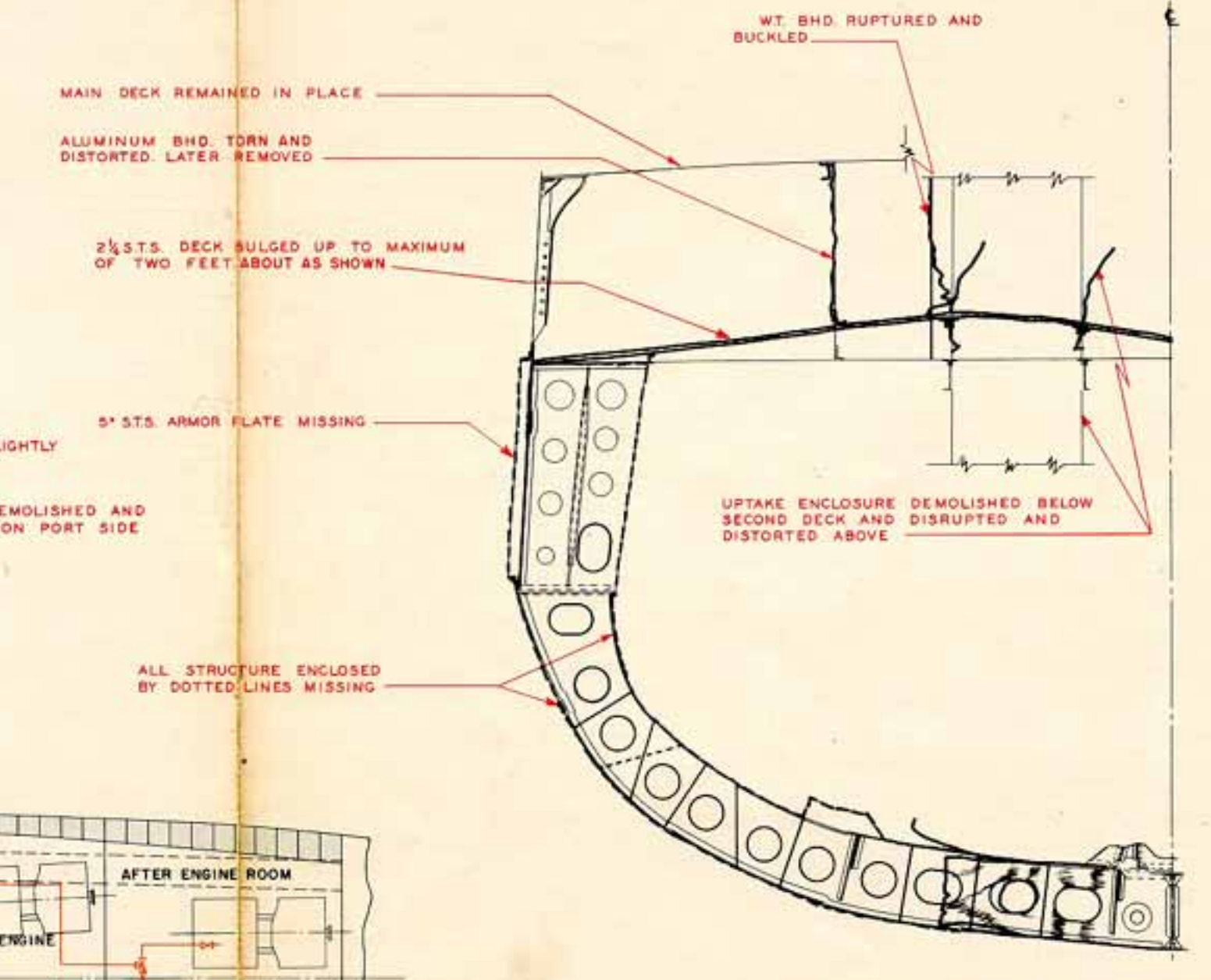
HOLD



SECOND DECK



DOUBLE BOTTOM



SECTION AT FRAME 63  
LOOKING FORWARD

LEGEND

-  DISTORTED PLATING
-  FLOODING DUE TO DAMAGE
-  LIQUID LOADING
-  DAMAGED STRUCTURE
-  DEMOLISHED OR MISSING STRUCTURE
-  MAIN STEAM PIPING

**NOTE**  
DAMAGE TO PORTION OF BOW LOST WAS NOT REPORTED ALL DAMAGE INDICATED FORWARD OF FRAME 20, EXCEPT ANGLE OF BOW, IS ESTIMATED FROM PREVIOUS SIMILAR WAR DAMAGE

U.S.S. MINNEAPOLIS CA-36  
LUNGA POINT 30 NOV. 1 DEC. 1942  
**TORPEDO DAMAGE**  
NAVY DEPT. BUREAU OF SHIPS  
CDL



Photo # 19-N-32461 USS Chester off the Mare Island Navy Yard, 6 August 1942





Photo # 19-N-73468 USS Chester off San Francisco, California, 1944



Photo # 19-N-73474 USS Chester at San Francisco, California, 1944



19-N-73474